

Bracknell Forest  
Local Safeguarding Children Board

# Annual Report

April 2012 to March 2013





# Chairs forward

I am delighted to present the Bracknell Forest Safeguarding Children Board Annual Report for 2012/13. The Safeguarding Children Board is a strategic partnership working together to safeguard and promote the welfare of children living in Bracknell Forest.

This Annual Report describes the main achievements of the Board and partners during 2012/13 to improve safeguarding practice and outcomes for children and young people.

The Report also describes the priority areas for Bracknell Forest LSCB going forward in 2013/14. It has agreed five targeted priorities in addition to ensuring that the Board fulfils its core statutory functions. The targeted priorities are focussing on the need to reduce the impact of domestic abuse, substance misuse and neglect on children and the need to embed early help and reduce the risk of child sexual exploitation. The core functions are:

- To continue to hold partner agencies and organisations to account for their practice through ongoing scrutiny of case files, performance data and Section 11 self assessments.
- To continue to commission effective multi-agency safeguarding training.
- To continue to review all child deaths and undertake case reviews where appropriate.
- To continue to ensure policies and procedures are developed and are fit for purpose.
- To raise awareness in the wider community of safeguarding arrangements

The recent publication by DfE of the revised statutory guidance, Working Together (March 2013) demonstrates the Government's Commitment to strengthening the role of LSCBs to monitor and scrutinise the effectiveness of all safeguarding arrangements.

The Board in this Annual Report provides significant evidence of the scrutiny and challenge it has undertaken throughout the year and this culture of continuous self assessment and constructive challenge is becoming increasingly rigorous and embedded within all partner organisations. The challenge going forward for the Board is to robustly demonstrate and evidence the impact of this activity on improving children's outcomes.

This Annual Report clearly demonstrates the significant amount of effective safeguarding activity undertaken by all partners in Bracknell Forest. I would like to record my thanks to all those who are involved in the Safeguarding Children Board and to all practitioners and the wider workforce who continue to demonstrate their commitment, passion and energy to protecting children and improving practice.

**Alex Walters**

**Independent Chair, Bracknell Forest Safeguarding Children Board.**

# Contents

	Section	Page
Chairs Forward		3
Introduction	1	5
About Bracknell Forest	1.1	6
About the LSCB	1.2	7
How does the LSCB Operate?	1.3	9
The Effectiveness of Local Safeguarding Arrangements	2	10
• Section 11 Safeguarding Self-Assessments	2.1	10
• Serious Case Review	2.2	12
• Review of safeguarding incidents and case reviews	2.3	13
• Child Deaths	2.4	13
• Performance Monitoring and Reporting	2.5	15
• Involvement of Children and Young People	2.6	16
LSCB Sub Groups	3	
• Quality Standards and Case Reviews	3.1	18
• Policies and Procedures	3.2	20
• Training and Development	3.3	20
• Shared Processes	3.4	21
• Workforce Development	3.5	22
• Raising Awareness	3.6	23
Progress and Impact against LSCB Targeted Priorities 2012-2013	4	25
Partnership Response to 2011- 2012 Annual Report Recommendations	5	28
Additional Areas of LSCB Activity and Challenge	6	30
Priorities for 2013 - 2014	7	33
Key Messages	8	34
Appendices		
LSCB Structure and Strategic Partnerships	A1	35
LSCB Executive Membership	A2	36
LSCB Data Set Monitoring	B	37
References		39



# 1. Introduction

This Annual Report is published by Bracknell Forest Local Safeguarding Children Board (LSCB) and is intended to give those working with, and planning services for children, young people and their families an overview of the work of the LSCB, its achievements and the challenges for its work in the future.

The early part of this document provides information in respect to the reports content, the context in which the LSCB undertakes its role, its statutory mandate and the structure of the Board, LSCB Forum and its Sub Groups.

The remainder of the report goes on to provide details of the range of work undertaken during the year to ensure children and young people are appropriately Safeguarded, their welfare is promoted through services delivered locally and how partner agencies are held to account on the effectiveness of their safeguarding arrangements.

The appendices referred to in the main body of the report provide additional detailed information as well as important contact details should further information be required.



## 1.1 About Bracknell Forest

Bracknell Forest lies 28 miles west of London and covers an area of 42 square miles, covering the towns of Bracknell and Sandhurst, the villages of Crowthorne, Binfield and outlying areas.

The Borough's population is 113,200 (2011 Census). The population growth rate has slowed considerably since 2001 from 11.7% to 3.3%. The population is relatively young (median age 38 years). Only 12.5% of the population is of pensionable age, compared to 16.3% nationally, although this is expected to grow. 28,000 (25%) are young people under the age of 18 years and the total number of pupils currently on roll at Bracknell Forest schools is approximately 16,000 (Jan 13).

While unemployment rates and measures of poverty and deprivation compare favourably with other areas of the UK, we recognise the impact this can have on the families affected and that such issues can adversely impact on children and young people's development.

Given the close proximity to other towns in the region, many families access services from agencies located within other Local Authority areas. This can present a challenge to organisations working with the most vulnerable families. This is particularly true of those families in need of emergency/temporary housing. As a result all too often children have to move out of the area until their parents can find more permanent accommodation locally. This risks links being broken with families and supportive services and provides a further obstacle to information sharing as well as significant practical difficulties in regard to the monitoring of vulnerable children.

84.9% of those living in Bracknell Forest are reported to be 'White British' (2011 Census). However, the percentage of those from Black and Minority Ethnic Groups (BME) has increased in recent years. This is further reflected in the number of school pupils from BME communities which increased to 18% in 2013. Although English is the first language for 90% of all pupils, a total of 78 languages (excluding English) are currently being spoken locally.

For children and young people growing up in Bracknell Forest, community cohesion is extremely important. While a lot of good work continues to be done through the local Community Safety Partnership, the LSCB is aware that being the victim of hate crime, anti-social behaviour, prejudice and discrimination can significantly impact of children and young people's wellbeing.

### Vulnerable Children and Young People

At the 31st March 2013 there were:

578 Children/Young People who had been assessed as being 'in need' of additional services (as defined within s17 Children Act 1989). This is the equivalent of 217.3 per 10,000 of the population of children and young people within the wider community. At the time of writing this report it was not possible to compare the proportion of children receiving these services with the equivalent data gathered regionally and nationally.

112 Children/Young People were the subject of Child Protection Plans because they were likely to suffer significant harm. This is the equivalent of 42.1 per 10,000 of the population of children and young people within the wider community. This is above the previous years average for the region (33.7 per 10,000) and the country (37.8 per 10,000 ). This is an area of continued focus and scrutiny by the LSCB to understand the increase and monitor the quality of work undertaken.

103 Children/Young People who were 'Looked After' by the Local Authority, with the majority of these being placed in foster care and is the equivalent of 38.7 per 10,000 of the population of children and young people within the wider community. This is below the previous years average for the region of (47 per 10,000) and across the country (59 per 10,000 ).

## 1.2 About the Local Safeguarding Children Board (LSCB)

The LSCB was first instituted as a statutory board in April 2006, and has become an established inter-agency forum that brings together senior managers who represent a broad range of organisations working together to promote the welfare of, or protect, children and young people in Bracknell Forest.

The LSCB is independently chaired and a key element of the Chair's function is to hold to account the partner members of the LSCB, both individually and collectively.

This critical role reflects the statutory requirement recently re-issued in the updated guidance, Working Together to Safeguard Children (HMGov, 2013)<sup>1</sup>.

This guidance in association with the underpinning legislative obligations<sup>2</sup> makes clear the requirement for LSCBs to have in place robust scrutiny of partner organisations and to ensure that its independent function is not subordinate to, nor subsumed within, other local structures. Statutory regulation supporting the implementation of Section 14 of the Children Act 2004 requires that the central focus of the LSCB is to:

- Ensure the effectiveness of local services safeguarding and child protection practice.
- Co-ordinate services' to promote the welfare of children and families.

In addition Regulation 5<sup>3</sup> of the Local Safeguarding Children Boards Regulations 2006 sets out the following specific LSCB roles and functions that support the objectives set out below:

### **(a) Developing policies and procedures**

for safeguarding and promoting the welfare of children in the area of the authority including policies and procedures in relation to:

- The actions to be taken where there are concerns about a child's safety or welfare, including thresholds for intervention.
- Training of persons who work with children or in services affecting the safety and welfare of children.

---

<sup>1</sup> <http://www.workingtogetheronline.co.uk/documents/Working%20TogetherFINAL.pdf>

<sup>2</sup> <http://www.legislation.gov.uk/ukpga/2004/31/contents>

<sup>3</sup> <http://www.legislation.gov.uk/uksi/2006/90/regulation/5/made>

- Recruitment and supervision of persons working with children.
- Investigation of allegations concerning persons who work with children.
- Safety and welfare of children who are privately fostered.
- Cooperation with neighbouring children's services authorities and their Board partners.

**(b) Communicating to persons and bodies in the area** of the authority the need to safeguard and promote the welfare of children, raising the awareness of how this can best be done and encouraging them to do so.

**(c) Monitoring and evaluating** the effectiveness of what is done by the authority and their Board partners individually and collectively to safeguard and promote the welfare of children and advising them on ways to improve.

**(d) Participating in the planning** of services for children in the area of the authority.

**(e) Undertaking reviews** of serious cases and advising the authority and Board partners on lessons to be learned

Regulation 6 provides for the inter-agency LSCB **Child Death Review** process, with Regulation 5 (3) providing for the LSCB to have discretion in respect of its engagement in any other activities "that facilitates, or is conducive to, the achievement of its objectives".

## Regional Collaboration

The risks facing some children and young people such as those referred to in this report have increasingly resulted in agencies across the Thames Valley area working more collaboratively. The LSCB has continued to support such initiatives and a regional perspective is maintained through an Independent Chairs and Business managers forum that ensures better communication and joint strategic planning and to make best use of scarce resources. It also provides oversight of a number of pan Berkshire sub-groups that support the LSCB to deliver its statutory functions.

One example of issues raised is that the forum has required Thames Valley Police to provide evidence of ongoing improvement to their internal processes and practice in relation to Domestic Abuse and the quality of referrals to Children's Social Care which is actively monitored by Bracknell Forest LSCB.



## 1.3 How does the LSCB Operate?

The **LSCB** meets six times a year on a bi-monthly basis, it is responsible for:

- Ensuring compliance with the statutory functions required of the LSCBs in Working Together to Safeguard Children 2013.
- Monitoring progress against the Business Plan.
- Scrutinising and challenging sub group activity.
- Monitoring Serious Case Review and Individual Management Review action plans.
- Receiving and commenting on annual reports on safeguarding activity.
- Agreeing and managing the Partnership Forum agenda.
- Developing the use of shared resources across partner agencies to enable the LSCB to carry out its duties and propose efficiencies.

The LSCB **Partnership Forum** meets three times a year and is intended to focus on:

- Discussion areas that are brought to the partnerships attention because of excellence or concerns.
- Sharing information and informing all partners on strategic developments.
- The consideration of national developments local initiatives and associated learning.
- The dissemination of information on 'lessons learned'.
- Supporting partners in their effective communication of safeguarding 'messages' within their own agency and within multi-agency settings.
- Participating in a rolling programme of workshops designed to extend members knowledge and understanding of specific issues to inform strategic governance and prepare for Announced Inspection.

The **LSCB Sub Groups (see appendix A)** report directly to the LSCB. The primary Function of the sub-groups is to undertake activity to meet the statutory functions of the LSCB and the strategic priorities identified in the business plan.

All sub-groups have terms of reference, which are approved by the Executive, and reviewed on an annual basis.

**The Independent Chair** works closely with all LSCB partners, and plays a key role in holding all agencies to account. The Independent Chair provides an effective link between the LSCB and a range of regional and national strategic activity and developments. The Chair is a member of the national association of Independent LSCB Chairs and attends their regional network meetings and annual conference.

The **Business Manager** supports the Chair in the ongoing management of the Executive, and Forum business activity. The Business Manager works with local organisations and regional networks to support the Chairs of the various sub-groups, providing advice, guidance and undertaking tasks and activities as relevant.

The Independent Chair, Business Manager, Board and Forum Members and Sub-Group Chairs have a collective responsibility to ensure they are able to represent the LSCB priorities within the range of roles and responsibilities they hold in their respective agencies. Their role is to ensure that where relevant priorities and actions should be joined up with strategic priorities and actions of key partnership plans to secure joint working and more effective use of resources.

## 2. Effectiveness of Local Safeguarding Arrangements

This section looks at how well organisations in Bracknell Forest keep children and young children safe, how well they work together, what lessons have been learnt, what has worked well and what might need to change or improve.

The LSCB assesses the effectiveness of local safeguarding arrangements in various ways, including:

- i. Section 11 safeguarding self-assessments undertaken by organisations.
- ii. Individual case analysis/auditing activity (including Serious Case Reviews)
- iii. Review of safeguarding incidents
- iv. Review of all Child Deaths
- v. Review of performance management information
- vi. Receiving feedback from children and young people

### 2.1 Section 11 Self Assessments

Bracknell Forest LSCB has implemented a strategy to ensure that all organisations working with children, young people or parents/carers self-assess the extent to which they adhere to the requirements of Section 11 of the Children Act 2004. It has supported partner agencies in undertaking assessments that are designed to help them consider their organisations management of its safeguarding responsibilities.

In the first phase of this work that commenced in 2009, all statutory partner organisations were asked to self-assess their performance; in the second phase schools (including private and independent schools) were also asked to undertake self-assessments and in the third phase consideration was given to voluntary, community, faith and early years services, some of whom were not technically subject to these requirements, but for whom the LSCB had a responsibility to ensure safeguarding standards were met.

#### **During 2012/13:**

We have continued to work closely with the other five LSCBs operating across Berkshire and have collectively sought to audit the 'Section 11' compliance of those statutory partner organisations operating across the region. This has included Thames Valley Police, Probation services, The Healthcare Trust and two acute hospitals and CAFCASS.

The process has been coordinated and monitored by a Pan Berkshire Section 11 Sub Group which has alerted the LSCB to the challenges of undertaking such work with limited resources, and the need for partners to identify additional capacity to support improvement. The complexities relating to the ongoing changes within the health economy have been a particular issue in 2012/13, and this has been brought to the attention of the Board.

**The outcome of this is that the LSCB's across all six unitary authorities have been assured of the status of partner organisation compliance with S11 Standards, and Bracknell Forest LSCB has reduced duplication for those partners who work across Berkshire (for example health, police). Any areas of concern that have been raised through the process and will be monitored by the Pan Berkshire Sub Group on behalf of the six LSCB's.**

In addition to the work undertaken on a 'Pan Berkshire' basis, the LSCB has overseen a specific Section 11 self - assessment undertaken by all departments within Bracknell Forest Local Authority covering all the Local Authority functions. The Local Authority engaged very positively with this process and the self-assessments were robust and challenging. The resulting Action Plans will be reviewed in the autumn of 2013.

As a result of the S11 process, the LSCB has identified the following themes/issues for improvement within organisations:

- That induction processes provide basic safeguarding information and extend to all staff and volunteers.
- That the individual commitment of some managers is reflected across their organisation and in particular within its senior management.
- That clarification is given in respect of agencies expectations in relation to information sharing.
- That a clear line of accountability exists and is understood within organisations.
- That staff and volunteers in contact with the public have access to the online procedures jointly provided by the LSCBs across Berkshire.
- The need for organisations to ensure a clear understanding of the role of the LADO and processes for managing allegations against staff are understood and adhered to.
- Organisations clarify the minimum standards for training.

**As a result of undertaking the self - assessment within Bracknell Forest a range of actions followed demonstrating a positive response to recommendations:**

- **A briefing paper on safeguarding roles and responsibilities was written and presented to the senior managers within the local authority, including the Chief Executive, Directors and Chief Officers.**
- **A safeguarding training session was delivered to the senior managers group which covered the roles and responsibilities of the LSCB, LADO function and child protection.**
- **The same training was also made available to a range of other staff within the Local Authorities Corporate Centre, and Chief Executive's Office.**
- **The Safeguarding Cue Card was widely distributed across the authority.**

The LSCB has continued to monitor S11 compliance within voluntary, community and faith groups and has identified the need for further work to develop the support required by the sector. In addition the Board has recognised the need for a more proportionate methodology for small organisations if we are to promote high standards of Safeguarding within those groups who are not subject to S11 requirements and this will be a focus in 2013/2014.

## 2.2. Individual Case Reviews

### Serious Case Reviews (SCRs)

Although no Serious Case Reviews (SCR) have been commissioned during the period of this annual report, the LSCB SCR Sub Group have continued to make great efforts to disseminate the learning from a Serious Case Review undertaken in respect of 'Child B', which was published in January 2013.

A great deal of specific learning from this SCR, together with the broader findings of research undertaken has been shared through presentations and workshops. The audiences have covered an extensive range of professional groups, senior leadership and management teams in a range of agencies and strategic partnerships including the Safeguarding Adults Partnership Board.

In addition, a presentation on the events surrounding the abuse of 'Child B' was presented to the 250 attendees at the LSCB's Annual Conference in June 2012 and a workshop capturing the learning from the SCR and also the 4 Case Review 'through the eyes of a child', was provided to a broad range of staff and volunteers. In addition to this event the LSCB has required that the learning from this review is reflected within the broader aspects of agencies professional development activities.

Recommendations made as a result of that SCR have been monitored by the SCR sub-group and the action plan which included all partner agencies has been signed off by the LSCB.

**As a result of the Serious Case Review in respect of Child 'B', the LSCB published advice to parents/carers and a protocol for professionals in regard to bruising to immobile children. As a result of this Health partners subsequently reported that during the first six months of its implementation the 'protocol' resulted in 8 referrals with significant safeguarding concerns being subsequently confirmed in 4 of these cases.**

In Jan 2013, Bracknell Forest LSCB volunteered along with five other LSCBs to be part of a national pilot commissioned by the Children's Improvement Board and involving SCIE to look at SCR processes and how to learning can most effectively be disseminated and embed in practice. Although no SCRs were undertaken during this period, the LSCB has been cognisant of learning established through the analysis contained in 'New learning from serious case reviews: a two year report for 2009-2011', (HM Gov, 2012).

The recently published Working Together to Safeguard Children (HM Gov, 2013), will provide the LSCB with a further opportunity to develop and bring together our SCR functions and a range of other activities that fall within the envisaged 'Learning and Improvement Framework'.

## 2.3. Review of Safeguarding Incidents and Case Reviews

In addition to the ongoing implementation of actions from the SCR into Child B, the LSCB SCR sub-group also reviewed the cases of three other children who were referred to the LSCB because they had been the subject of serious alleged abuse. A SCR was not commissioned in respect of these children, but in order to learn from their cases a brief analysis was completed and further work identified to be undertaken in order to maximise the learning for partner organisations.

**In case 1**, the child became the subject of more in-depth analysis and is the subject of an ongoing 'Partnership Review' which will be reported in the LSCB's 2013-2014 Annual Report. However, the approach adopted will utilise 'Practice Review' analysis and 'Systems' methodology. The review will seek to bring together a range of staff directly involved and will also attempt to engage the parents, in order that these perspectives are able to inform our understanding and support improvements.

**In case 2**, specific actions were able to be identified by the Serious Case Review Sub Group that will attempt to support staff in their work to engage men and has been identified as an area for further development.

This work will consider the specific interventions required when working with men whose violence may pose a risk to children, and how in cases where family members who have concerns about children can be encouraged to alert agencies.

**In case 3**, the initial analysis highlighted concerns about the practice of one of the partner organisations, which is being actively followed up and monitored by the LSCB SCR sub-group.

## 2.4 Child Deaths

The LSCB has a statutory responsibility for ensuring that a review of each death of a child normally resident in their area is undertaken by a Child Death Overview Panel (CDOP). The Panel membership is drawn from organisations represented on the LSCB, but has the flexibility to co-opt other relevant professionals where necessary and are accountable to the LSCB Chair.

Bracknell Forest LSCB works in partnership with 5 neighbouring LSCBs and jointly commission a Pan Berkshire CDOP to operate as an LSCB Sub Group and to fulfil the requirements identified in Working Together 2013.

The key purpose for reviewing child deaths is to learn lessons and reduce child deaths in the future. However, the panel identify areas in which all professionals, including healthcare and social care professionals can learn and improve the care they provide. As part of its function it routinely collects data on the following risk factors: maternal obesity, maternal smoking, co-sleeping, smoking parent/carer, domestic abuse, IVF, alcohol, late bookings and consanguinity of parents



The LSCB is notified of the death of all children and young people reported to the CDOP and in turn receive regular reports following the completion of a more detailed analysis by the panel. This data is subsequently reported to the Department for Education.

The panel has achieved greater consistency in the approaches undertaken by agencies located in Berkshire and regularly communicates its work and findings through the LSCB and via the circulation of a new newsletter. In addition key messages and learning is disseminated through staff training

During the period April 2012 to March 2013 CDOP reviewed 6 child deaths that occurred in Bracknell Forest and a total of 57 across Berkshire. Statistically, there is a danger in regard to any judgement being made based on such small numbers of incidents, although they of course represent a catastrophic loss for each and every family.

However, undertaking such reviews across 6 LSCB areas does enable Boards to more reliably consider the possibility of emerging themes and ensure partner agencies take all appropriate actions to reduce the chances of such tragedies occurring.

Some of the positive trends emerging from the analysis of cases across Berkshire undertaken by the Panel include:

- A reduction in reviewed and actual numbers of deaths
- a 16.2% reduction in reviewed deaths from 68 in 2011/12, to 57 in 2012/13
- a 55% reduction in the actual number of deaths, from 75 in 2011/12 to 34 in 2012/13
- a 35% reduction in reviewed perinatal/neonatal deaths from 26 in 2011/12, to 17 in 2012/13
- during 2012/13 no cases of Sudden Infant Death Syndrome (SIDS) or Sudden Infant Death in Infancy (SUDI) were reviewed by the panel

The knowledge accumulated through the process provides important areas of ongoing challenge for the CDOP/LSCB, these include:

The need to continue to reduce neonatal mortality

- early recognition of 'at risk' pregnancies and neonates, and transfer to specialist care early
- adoption of neonatal sepsis guidelines (RBH)
- continuation of the promotion of 'Back to Sleep' – particularly to within BME communities

The need to identify and reduce deaths due to congenital/ chromosomal abnormalities - which represented 22 of 57 deaths (39%) to ensure:

- consanguinity data is routinely recorded
- continuation of reporting abnormalities to Congenital Anomaly Register for Oxfordshire, Berkshire and Buckinghamshire (CAROBB) and Fetal Medicine/Prenatal Diagnosis Teams
- undertaking screening and health promotion among those communities at high risk

**One outcome of the work of CDOP was to promote guidance and information on safe sleeping; the “Back to Sleep” campaign consisted of leaflets and posters promoting best practice in safe sleeping to reduce the risk of cot death.**

## 2.5 Performance Monitoring and Reporting

Bracknell Forest LSCB (in collaboration with neighbouring LSCBs) has sought to further consolidate a 'Pan Berkshire' dataset that reflects the local priorities determined by the six LSCBs.

An analysis of the information collated and performance data is considered undertaken by the LSCB and where necessary further scrutiny is undertaken. The information gleaned as a result of this routine data collation also informs the Board's strategic prioritisation and future business planning.

**A list of the data routinely monitored by the LSCB is contained in appendix B.**

### **In 2012/13 the LSCB has been encouraged by the following developments:**

- **Reduction in school exclusions** - The rate of permanent exclusions has reduced significantly in 2012/13 (0.03% compared to 0.17%) which is a decrease of 23 pupils (28 to 5).
- **A reduction in first time entrants to youth offending service** - The number of first time entrants (FTE) to the Youth Justice system decreased from 67 to 34 (-49%) between 2011-12 and 2012-13. In contrast to this, there has been an increase in referrals to the YOS Prevention Service in past 12 months (about 35%) which suggests that work is being targeted at young people at risk of offending at an earlier stage.
- **Victims of Crime (u18s)** - There were 49 children identified as victims of violence with injury offences and 57 without injury in 2012/13. This is a reduction of 42% and 31% respectively.
- **The number of sexual offences against u18 year olds** has seen a reduction again this year (-15% between 2011/12 and 2012/13). The rolling quarterly average shows the overall trend is downward.

## The LSCB will continue to monitor performance information, and in particular will be focusing on:

- **Child Protection Plans** - There has been an increase in the number of children and young people with Child Protection (CP) Plans in 2012-13. The end of March 2013 figure was 112 which is an increase of 30 (37%) from the same time the previous year. Some analysis has already taken place to understand the reasons behind this, and the LSCB will continue to monitor this closely.
- **Allegations against the workforce** - There were 56 allegations against the children's workforce in 2012-13 (compared to 47 in the previous year and 37 the year before that) and 15 of those (27%) led to disciplinary action. It is evident that there has been a particular rise in regard to staff in early years and education settings. There were none that led to criminal conviction but there are four ongoing criminal cases; two from 2011 and two from 2012.
- **Domestic abuse where children are in the household** - There were 1,842 domestic abuse incidents in 2012/13. Children were identified as being in the household in just over half (54%) of these. In the 988 domestic abuse incidents where children were identified, there were 1,871 children linked to the incidents on the crime recording system. The trend data suggests that the number of domestic incidents where there were children in the household has been rising (12% higher than the previous year).
- **Drug and Alcohol Misuse** - There were 82 under-18s in drug/alcohol treatment during 2012/13 (42 of these were new presentations). This is a 19% increase on the previous year (69).

## 2.6 Involvement of Children and Young People

The LSCB is aware that it has more to do if it is to ensure children and young people's voice is strongly heard in the evaluation of services.

However, there are many good examples of work undertaken locally that have helped inform the development and delivery of services. Excellent work has been done with young people in an attempt to develop initiatives and services including those focussed on E Safety and Domestic Abuse.

Through the engagement of children and young people the LSCB Raising Awareness group was able to develop resources that addressed the issue of domestic abuse and bullying. Young people's participation in surveys relating to abuse within their relationships also helped inform the work of the LSCB and the production of the DVD previously mentioned. This resource was also adapted for use within the local Nepali community.

Similarly the sub-group promoted / co-ordinated other campaigns led by partner agencies such as the Police and Schools led projects to highlight violence against girls and women and the provision of 'healthy relationship' workshops targeted at young people in Bracknell Forest. While it is feared that many children and young people are effected by the 1,649 incidents of Domestic Abuse locally reported to the Police (Government estimates suggest that only 1/3 of such abuse is reported), a small scale study undertaken in Bracknell Forest helped raise awareness amongst young people

and professionals, and concluded that 27% of those young people surveyed had experienced verbal abuse within their relationships with other young people, with 18% reporting aspects of physical abuse taking place.

In addition, the LSCB has also been assured by the work being undertaken with 'Looked After' children and young people, as well as the increased level of consultation being developed in regard to children and young people subject to Child Protection Plans.

During 2013/2014, the LSCB will work with partner agencies to encourage them to capture more information of their engagement work that is thought to take place but is currently difficult to evidence.



# 3 LSCB Sub Group

## 3.1 Quality Standards and Case Reviews

The Quality Standards and Case Review sub-group of the LSCB provides an important quality assurance role, combining audit and scrutiny functions to ensure the effectiveness of services to children / young people and their families. The sub group's work is split into the following three areas:

1. 'Targeted' Practice Reviews. Practice Reviews are undertaken on an inter-agency basis and are informed by an annual programme of work addressing targeted themes set out within the LSCB Business Plan. A standardised format of audit supports the process of case review and seeks to provide an in-depth analysis of interventions, identifying both good practice as well as areas for improvement.
2. Analyses of 'S11' audits, submitted by those agencies that provide services within Bracknell Forest. A separate 'Pan Berkshire' S11 sub group monitors organisations that deliver services on a county wide basis.
3. Peer review of a multi-agency 'Child Protection' core data.

In 2012/13 the group's work plan included:

- The submission of Bracknell Forest Council's S11 self assessment
- Case audits regarding the impact of Domestic Abuse
- Qualitative analysis of a sample of repeat referrals to Children's Social Care
- Qualitative analysis of a sample of cases involving children under 1 year of age

The findings from analysis of the above reviews were reported to the LSCB, and actions agreed.

### Domestic Abuse

The audit work undertaken by the Quality Standards and Case Review sub group in regard to Domestic Abuse, together with the Action Plan endorsed by the LSCB Forum, was presented to the Domestic Abuse Executive group who will monitor progress and update the LSCB Exec on progress against issues identified.

However, much effort has been made to tackle Domestic Abuse and build on the existing work reviewed in 2011. As a result the Domestic Abuse Service Co-ordination (DASC) project has continue to develop and is a key element of the Community Safety Partnership's strategy to tackle domestic abuse. The project funded by the Local Authority aimed to address a gap in services to 'standard' and 'medium-risk' victims and perpetrators of such abuse.

The project has continued to improve the level of support to victims and their children, as well as to enhanced the level of management and supervision of perpetrators. Services to victims have also been enhanced and outreach services for victims are provided by both Berkshire Women's Aid and the Integrated Offender Management (IOM) service who offer enhanced therapeutic services.



In addition, Children's Social Care in conjunction with the Enhanced IOM have developed a 'Domestic Abuse Perpetrators Service' providing a 'one to one' service for perpetrators. In addition, police neighbourhood teams regularly visit those engaged in the project and where necessary additional support and surveillance is provided.

Although the LSCB continues to monitor the impact of the project and its initial results appear to be very promising, we understand that a full independent evaluation has been commissioned.

To date it has been reported that the number of repeat calls to police in respect of this cohort reduced by 35% in 2012/13 and is the lowest level of repeats calls since the project began recording such incidents in January 2011. In contrast to the previous year the project recorded a no repeat calls in December 2012. Christmas and New Year are known to be high risk times for Domestic Abuse (DA) and previous years have reportedly seen significant peaks in recorded DA as well as victims seeking outreach from support services.

As a result of these initial findings, the DASC project will be expanded in 2013/14 to include 90 couples. As mentioned above, Cambridge University is to conduct an independent scientific evaluation of the results to determine whether the DASC approach has been effective in reducing repeat offending. The results of this work will be reported to the LSCB and will feature in our 2013-2014 Annual Report..

## **Audit of Parenting Courses**

Following recommendations from a previous thematic analysis, a review of parenting courses was undertaken in regard to 'harder to reach' parents, including those whose children were subject to Child Protection Plans.

The subsequent presentation and discussion resulted in valuable learning with the following key issues highlighted:

- Professionals are often not aware of the range of parenting options available
- The involvement of fathers is still variable and they are not always involved in decisions made about their children
- Issues around early help and the ongoing work is already being monitored by the LSCB
- The parenting strategy working group will look at the findings and recommendations from this report and ensure they are taken forward, where any issues arise an exception report will be made to the LSCB

## **Learning and Improvement Framework**

Mindful of the proposed changes in respect of the statutory guidance contained in 'Working Together 2013', the group have considered how its function would compliment the concept of a 'Local Learning and Improvement Framework' (Chapter 4, Working Together 2013).

The requirements set out within the guidance give rise to questions about the links between the Sub Group and the various LSCB functions proposed, including those in respect of Serious Case Reviews, Child Protection Incident Reviews, Training and locally our activities in respect of performance management, S11 audits etc.

In line with the revisions made to the LSCB Business Plan and the additional priorities identified, the group reviewed its terms of reference and considered how its work plan could align with that of the Boards strategic priorities. In doing so it attempted to embrace some of the integration required within a 'Local Learning and Improvement Framework', but is aware that further work will be required to clarify how this can be taken forward.

The group have also considered the need to engage front-line staff (to include those from the community and voluntary sector); although establishing such an approach is likely to be difficult, it was recognised as being of great importance. In addition, the group discussed the challenge of how its work could ensure the engagement of children, young people and their families. This will be an area of increased activity in 2013/14.

## 3.2 Policies and Procedures (Pan Berkshire Sub Group)

The Policies and Procedures Sub Group is made up of representatives from each of the six Berkshire Unitary authorities. Its main function is to manage and oversee the Pan Berkshire Child Protection Policies and Procedures, undertake revisions as and when necessary and ensure that each respective LSCB is consulted on any proposed changes / developments.

The group has met three times during 2012/13 and facilitated a range of consultation and updates to the online system.

In addition to the core function of the group, it also monitors the amount of site usage, for people accessing the online policies and procedures. During 2012/13 there were 6% fewer visits overall (11,377 this year, 12,067 in the previous year).

In Bracknell Forest there has also been a reduction in people accessing the site, with 753 visits in 2011/12 and 535 visits in 2012/13. As a result, further work will need to be undertaken to raise awareness of practitioners of the online system and encourage greater use of the resource.

**A key achievement has been the development and roll out of the Bruising Protocol for babies and immobile infants which was led by Bracknell Forest. This protocol was a direct result of the learning from the Serious Case Review on Baby B.**

## 3.3 Commissioning and delivery of multi-agency safeguarding training and development (East Berkshire Sub Group)

Bracknell Forest LSCB has a strong track record of providing interagency training across a diverse workforce, including staff from both statutory and voluntary agencies.

In recent years the delivery of training has been coordinated regionally through an East Berkshire Training Group. In November 2012 work commenced to expand this collaborative model to include all six Berkshire LSCB's and to develop and strengthen its strategic function. Moving forward into 2013/14 a new Berkshire LSCB Training Sub Group will be piloted.

The training provided is detailed in a Training Calendar, which is available on the LSCB website; this details a comprehensive range of training available across the scope of universal, targeted and specialist safeguarding training.

During 2012/13 1,617 members of the children's workforce attended safeguarding training which represents a 26% increase on the previous year.

Analysis of participant's course evaluations evidenced high levels of satisfaction in respect of the inter-agency training attended.

- 70% of participants reported improved confidence.
- 10% reported confidence as being maintained.
- 20% made no comment.
- The increase in confidence was linked to improved knowledge, confidence to challenge others, and confidence in sharing knowledge with others.
- 100% of course participants reported that the course reflected current research, including quoting serious case reviews locally and nationally.

**As a result of attending inter-agency training, the majority of participants reported having increased confidence and all agreed that its content reflected contemporary issues relating to child protection.**

### 3.4 Shared Processes (Renamed Early Intervention Group)

The Shared Processes Group is an inter-agency group reporting to the LSCB and the Children and Young People's Partnership Board. Although the Group has maintained a focus on the delivery of the Common Assessment Framework, during 2012/2013, it has responded to the findings of reviews undertaken by the Local Authority Overview and Scrutiny Panel for Children, Young People and Learning, an 'internal' Council review of CAF processes, together with recommendations made by the LSCB . As a result work has been undertaken to improve access to and use of the CAF.

#### **Key achievements in the year 2012/13 include:**

- Increased Local Authority resources to build capacity, this included recruitment of a Common Assessment Framework Support Officer and an Early Intervention Social Worker, to target and work with families who have additional needs and to reduce the risk of these needs escalating to a crisis level.
- The introduction of an Early Intervention Hub, which will provide a single coordinated multi-agency forum to ensure prevention and early intervention services are offered to children and young people and families in a planned and coordinated way.
- The development of a range of tools and materials to support practitioners in undertaking assessment. This included tools to use with young people to enable them to contribute to the assessment in the most appropriate way. A leaflet for children in schools was also developed by young people as a way of explaining the CAF and how it might help.

- The development of step up and step down procedures into and out of tier three services such as Children's Social Care, CAMHS etc. This work is in its early stages and will continue during 2013/14.
- During 2012/13, a total of 273 CAF assessments were completed; outcomes of the CAF included multi-agency response (209), specialist services, Children's Social Care, CAMHS, SEN and Youth Offending Service.
- The Early Intervention Hub was launched in November 2012 and in the period November 2012 to March 2013, 176 cases were referred for multi-agency discussion.
- 113 practitioners from across the Children's workforce attended CAF training during the year, in addition to this a number of bespoke training sessions took place including school personnel, school Governors and midwives.
- Moving forward, work will be undertaken to evaluate the impact of the Hub on early intervention and to further embed the principles of early help. The LSCB will continue to monitor and receive reports on the effectiveness of the arrangements for providing early help as this is now a strategic priority for 2013/14.

### 3.5 Workforce Development

The LSCB remains appraised of safer workforce issues in a number of ways.

- The LSCB Safer Workforce training programme was reviewed and updated in 2011/12, in association with the Safeguarding Adults Partnership Board. Over 400 staff have attended the programme since its introduction in 2009; and places continue to be purchased on the training by neighbouring authorities.
- LADO (Local Authority Designated Officer) annual report to the LSCB on activity, key issues and outcomes.
- Presentations and updates in relation to the changes in the Disclosure and Barring Scheme, which included a workshop with the LSCB Forum members in March 2013.

**The LSCB remains appraised of changes in workforce guidance, and it monitors the delivery of training through the sub-group. LADO issues are regularly reported and key issues noted. The wider Forum has been given the opportunity to participate in a workshop to receive information and understand the changes in safer workforce guidance.**

## 3.6 Raising Awareness

The Raising Awareness Sub Group has continued to work closely with a number of the LSCB's Sub Groups in order that key messages are communicated to the workforce and wider public.

During 2012/2013 the group worked hard at communicating the learning from the Serious Case Review in respect of Child 'B' and associated areas of activity including dissemination of leaflets containing guidance for parents/carers and professionals highlighted earlier in this report. Awareness of these documents and other learning was further assured through a programme of lunchtime briefings for operational staff and their managers. Similarly, the LSCB newsletter and website supported the group's communication strategy and assisted in providing access to learning for large numbers of staff and members of the public.

'All Babies Count' booklets published by the NSPCC in respect of safeguarding infants were also purchased and disseminated, providing staff with a range of contemporary messages in regard to the vulnerability of very young children.

In addition to the above distribution of knowledge, staff working with young children were also targeted within a 'Step Up' campaign that sought to ensure they acted upon their concerns and reported cases of children they felt children may be a risk.

The LSCB Conference held in June 2012, also proved a very successful method of engaging large numbers of staff and volunteers (250 delegates) from organisations representing the breadth of the local partnerships.

The conference was opened by the LSCB Independent Chair, Alex Walters, and was an opportunity to hear from keynote speakers, including the Development Manager for the 'All Babies Count' campaign for the NSPCC, Sally Hogg; and a lead researcher for the 'Centre for Children and Family Research' (funded by the DfE), Rebecca Brown who is leading a longitudinal study on the impact of abuse and neglect on life chances for children. The speakers provided different perspectives and professional models of identifying, and responding to, the needs of vulnerable children.

As previously stated the focus of the day was on the learning from Bracknell Forest's Serious Case Review, and a number of specialist workshops were provided on the day on protecting vulnerable children, with a particular focus on children under the age of 5.

One of the highlights of the day was a presentation of a drama resource developed by Bracknell Forest young people from Edgbarrow School on the impact of domestic abuse on children and young people, called 'The Lobster'. This very powerful DVD resource is available to local LSCB partners to use in schools, youth support settings and other services working with young people - to help build understanding about domestic abuse, to promote what it means to be in a 'positive relationship' and to encourage young people experiencing or witnessing domestic abuse to seek help and support.



**The impact of the conference was measured through evaluation, some key highlights / comments from people asked about how the Conference would improve their practice included:**

“Increased my knowledge/awareness and increased my confidence within my area”

“To be very aware of vulnerability of babies”

“Bruising protocol - will be aware for siblings and babies that are immobile”

“Include bruising protocol in our new procedures”

“Policy updating and staff training”

“Plan how to use knowledge with families especially under 1s”

“Embed key learning with teams, raise awareness”

**Some additional comments made included:**

“Very motivational day”

“Fantastically run, wonderful speakers and brilliant involvement of young people”

“A good day for reflection and learning”

In addition to the focussed activity of the group in respect of the SCR, a key area of its other activities focussed on Domestic Abuse, bullying and stalking.



# 4. LSCB Targeted Priorities 2012/13 - progress and impact

This report describes the core activity undertaken by the LSCB to achieve its statutory requirements. The LSCB Business Plan 2011 to 2013 identified a number of additional targeted priorities to focus on in addition to the key statutory requirements.

The priorities were identified through consultation with LSCB partners, and with the Children and Young People's Partnership and the Community Safety Partnership.

The three targeted priorities were to:

- Work with partner agencies to reduce the impact of domestic violence on children, young people and families.
- Ensure partner agencies analyse, understand and seek ways to reduce the impact of **substance and alcohol misuse** on children, young people and families.
- Support partner agencies in developing a greater understanding of **neglect** and the impact this has on children, young people and families; and to work together to reduce the number of children experiencing neglect.

## Progress against 2012/13 Targeted Priorities

### ***1. Work with partner agencies to reduce incidences of domestic violence and the impact this has on children, young people and families.***

The LSCB works closely with the Community Safety Partnership to address domestic abuse issues, in particular linking to the Domestic Abuse Forum, which coordinates the delivery of domestic abuse support across partner agencies. The Domestic Abuse Forum provides regular performance monitoring information for the LSCB, and produces an annual report to demonstrate its progress in addressing domestic abuse.

Although the LSCB has continued to be concerned at the prevalence of domestic abuse and the number of children present during domestic violence incidents, it has welcomed closer working between Thames Valley Police and the Local Authority and their commitment to improving the way in which reports of concern are dealt with.

### ***There have been a number of achievements in the year, some of which are noted below:***

- Domestic Abuse Perpetrators Service – providing individual work with male perpetrators where there is a child on a Child Protection Plan. This work has resulted in 29 children in families where the father has engaged with the programme coming off a Child Protection Plan since October 2011.

- Provision of targeted domestic abuse training across partner agencies, This includes 21 delegates attending an introduction to domestic abuse training, 42 delegates attending MARAC and DASH training, 13 delegates attending HBV and FM training, 7 delegates trained to facilitate PICADA programmes (specialist programme for children and young people who have witnessed domestic abuse), 24 delegates trained in understanding and supporting people who have been victim to Cyber-stalking.
- Promoting the features of positive relationships to children, young people, parents and carers through a play called “The Lobster” (jointly funded by the LSCB and the Community Safety Partnership). The play was shown to participants at the LSCB Conference in June 2012, and was rolled out as a DVD in December 2012 with a supporting resource pack for use in schools.

**The LSCB has maintained an overview of this work, has contributed funding and Business Manager support towards the development of resources to be used in schools, and continues to monitor the impact of work across partner organisations.**

## ***2. Ensure partner agencies analyse, understand and seek ways to reduce the impact of substance and alcohol misuse on children, young people and families.***

During the period covered in this annual report the LSCB raised concerns about the high levels of drug use among young people locally. In particular the increased use of Mephedrone was of significant concern as were the intelligence reports that the ‘importation’ of drugs from outside the area was being linked to concerns of sexual exploitation of some young women.

Given the area’s proximity to London, there are also potential risks that a small number of young people’s drug use on occasions brings them into conflict with organised gangs based in the capital.

### **In order to address the issue the following action was undertaken:**

- A strategic group was established to develop and oversee the delivery of the actions in the Mephedrone Strategy, an additional worker was employed to deliver targeted outreach support to young people and a specific educational programme was commissioned.
- As a direct result of these actions outreach support has been delivered to young people in key areas of the borough, sessions were delivered in six secondary schools to appropriate year groups, and 39 young people entered treatment in the first three quarters of the year who were using Mephedrone, or other amphetamines compared to 26 in the previous year.

**LSCB partners were able to contribute significantly to this strategic response to an identified need within the borough. The LSCB remained apprised of progress and of the effectiveness of the action plan, and will continue to monitor progress through reporting.**

**3. Support partner agencies in developing a greater understanding of neglect and the impact this has on children, young people and families; and to work together to reduce the number of children experiencing neglect.**

Neglect had been identified as a specific issue in the 2012/13 Business Plan, and in order to gain a greater understanding of this a Neglect Sub Group was established to.

**As a direct result of the work undertaken the following has taken place:**

- A guide to neglect based on a graded care profile has been developed, and is due to be launched in 2013/14.
- Additional resources were allocated through the Council to provide a service that will work with neglectful parents who have a child on a Child Protection Plan and have mild cognitive disabilities.
- Targeted audit of parents who have had children on a child protection plan linked to their engagement with parenting groups.
- Identification of the need for further training on neglect, one action moving forward was to theme the 2013 LSCB Conference around the subject of neglect to support this aim.

**The LSCB has been able to gain a better understanding of the issues of neglect, and the impact of this locally on child protection plans. The neglect guide is due to be launched in 2013/14, and the LSCB Conference in June 2013 will be themed around the subject of neglect in order to target a high volume of partners and stakeholders, therefore raising awareness of the issues.**



# 5. Partnership Response to Recommendations in the 2011/12 LSCB Annual Report

The LSCB made a series of recommendations to the Children and Young People's Partnership and the Health and Wellbeing Board as a result of its 2011/12 Annual Report. This section details the responses from the Children and Young People's Partnership.

**The Health and Wellbeing Board** was established as a legal entity on 1 April 2013 and as such was not able to formally respond to those recommendations made while it was in Shadow form. It should be noted however that the Health and Wellbeing Board has received reports on a range of LSCB issues, including:

The LSCB Annual Report for 2012/13.

- A report on the Business Plan priorities for 2013/14.
- A report on the Section 11 self-assessment requirements, including highlighting the Health and Wellbeing Board responsibilities in relation to S11.
- This Annual Report is scheduled to be presented to the Health and Wellbeing Board in October 2013.

## Children and Young People's Partnership

The box below details the recommendations made to the Children and Young People's Partnership in the 2011/12 Annual Report. A formal response to these recommendations is made through the Children and Young People's Plan Review to demonstrate what action has been taken to address the recommendations.

### Recommendation to the CYP Partnership:

That the CYP Partnership reviews the progress it has made with implementing the learning from QSCR analysis and considers how the findings could inform the development of the Early Intervention Hub.

To ensure that organisations commissioned by statutory partner agencies to provide services to children, young people or families adhere to Bracknell Forest LSCB's minimum safeguarding standards and have completed a satisfactory Section 11 self-assessment.

To ensure that the learning from the Serious Case Review informs the strategic priorities of the CYP Plan; and directly informs the development of the Early Intervention Hub and the continued development of 'Shared Processes' i.e. Common Assessment Framework (CAF).

To ensure that the learning from the 4 Case Review informs the strategic priorities of the CYP Plan; and directly informs the development of the Early Intervention Hub.



## Response from the CYP Partnership:

Any commissioning that is undertaken by the local authority which involves direct contact with children and young people requires that a satisfactory S11 self-assessment is undertaken. Safeguarding is included within the ongoing contract monitoring.

The Children and Young People's Plan retains as one of its overarching priorities a focus on safeguarding children and young people. Actions that sit under this priority are closely linked to the LSCB Business plan priorities and the Community Safety Partnership.

The Children and Young People's Partnership undertakes an annual review of the Children and Young People's Plan, and provides an account of actions undertaken as a result of LSCB recommendations. In the year 2012/13 there has been a focus on the continued development of the CAF, and on the development of an Early Intervention Hub. The Hub was launched in November 2012 and in the period November 2012 to 31 March 2013 discussed the needs of 192 children and young people.





## 6. Additional Areas of LSCB activity and challenge

During 2012/13 there have been a number of local issues brought to the attention of Bracknell Forest LSCB where the LSCB has undertaken additional scrutiny and required reports/information to provide further assurance. These include:

- **Child Sexual Exploitation (CSE) / Trafficking** - building on the work previously undertaken in regard to CSE, during 2012 the LSCB continued to gather local intelligence and monitor the risks to young people in Bracknell Forest. Presently, it does not appear that there are large numbers of young people being exploited however, the LSCB is mindful of the emerging evidence across Berkshire. In addition research being undertaken Nationally suggest such abuse is likely to remain hidden unless co-ordinated efforts are made to identify perpetrators and their victims. Through regular inter-agency meetings partner organisations currently monitor a small number of young people thought to be at risk of CSE. Closer links have also developed between this group and colleagues monitoring 'missing / absent' children. The LSCB contributed to the Children's Commissioners Inquiry into CSE and used the findings from her Interim Report (together with other research) to review our existing strategy.
- **Missing Children** - an inter-agency 'Missing Children's Meeting is held monthly in respect of children and young people from Bracknell Forest. The group co-ordinates joint responses to those who are repeatedly absent / go missing and as previously mentioned, Thames Valley Police (TVP) have strengthened the links between this group and their response to CSE. A dedicated TVP Intelligence Officer now attends meetings and link with colleagues working in the areas of CSE. Data (only available for part of this period) indicates a significant rise in the number of children/young people going missing on the first occasion, and an increase in those who do so repeatedly. Although partial, the data available also indicates there to be an increase in the proportion who are 'Looked After' by the Local Authority. The LSCB continues to monitor this area of work and receives regular reports from the LA.
- **Private Fostering** - notwithstanding an ongoing programme of raising public and professional awareness, the Local Authority received fewer notifications during this period than in previous years. This was also in spite of a procedure had been put in place to ensure that the private schools reported placements made during school holidays. In addition following a previous recommendation by the LSCB, schools are now contacted prior to each holiday and asked to return a form to the Local Authority stating whether any children are the subject to such arrangements. The LSCB continues to closely monitor this area of its work.
- **Previously high rates of permanent exclusions in Bracknell Forest schools** - the LSCB was pleased to note that positive action had been taken which included providing additional specialist support that has been targeted to address the specific needs of children /young people previously excluded from schools.

- **Substance Misuse** - the LSCB has continued to monitor partner agencies responses to parental substance misuse and its impact on children and young people. However, during 2012 the Board was appraised of growing concerns in regard to young peoples own use and the impact of Mephedrone. The Police together with specialist workers located within the Local Authority and Health Care Trusts informed the LSCB of the actions previously taken and the development of an inter-agency strategic group who will continue to manage the responses agreed. The issue of alcohol and substance misuse remains a targeted priority during the coming year.
- **The numbers of homeless families in Bracknell Forest and the support available to them** – The LSCB has a representative from Housing Needs as a member, and remains appraised of the issues and impact of homelessness, and of the actions taken to support those families who have been affected.
- **The potential impact of the welfare benefit changes in Bracknell Forest on children and families** – The LSCB has remained appraised of the pending changes in welfare benefits, and highlighted risks and concerns, and will continue to monitor impact on children, young people and families.
- **An external review of the Leisure function commissioned by the Local Authority** – The LSCB was able to contribute to the review, and received the final report and recommendations made as a result of the review.
- **An external review of an independent school commissioned by the school with LSCB support** – The LSCB was assured at the end of the review with regards to the processes in place for safeguarding children within independent schools. As a positive outcome a member of staff representing Independent Schools became a member of the LSCB Forum.
- **Ongoing monitoring of an independent school in Bracknell and assurance of the Local Authority and regulator response** – The LSCB was able to consider the processes in place when areas of concern are identified and clarify the appropriate action for relevant authorities to take.
- **The increasing numbers of children subject to Child Protection Plans and the effectiveness of the multi-agency responses** – The LSCB was able to consider through analysis some of the key data and issues in relation to the increases in child protection numbers. Further work continues to develop a better understanding of the needs of children, and this will be reported during the 2013/ 14 year.
- **The implementation of the Early Help arrangements** – The LSCB has retained oversight of the early help arrangements and received the annual report on the Common Assessment Framework, and noted the positive impact of the implementation of the Early Intervention Hub model. The LSCB will continue to monitor this through the work of the Early Intervention Group.
- **The structural changes in the health system and the assurance that safeguarding commitment would be maintained** – The LSCB membership has changed to reflect the changes within the health system, and various guest speakers have attended meetings to present and discuss developments. Good links have been made to the Health and Wellbeing Board; the Independent Chair attended to present the 2011/12 Annual Report, and is scheduled to do the same with the 2012/13 report.

- **The national DoH review into the Jimmy Savile case in relation specifically to his involvement with Broadmoor Special Hospital** – The LSCB has received regular progress reports on this via the Broadmoor and Adult Safeguarding Board representatives on the Forum.
- **The effectiveness of the Independent Reviewing Officer Role** – The LSCB received and discussed the Annual IRO Report which provides an account of the IRO role and reports on key challenges and good practice.
- **The effectiveness of the statutory Complaints Procedure** – The LSCB has received and commented on the Annual Statutory Complaints report for Children’s Services.
- **South East Quality Assurance Project** - during the early part of this year the Children’s Improvement Board funded a regional project to support the work of LSCB’s across the south east region. It is hoped that this work will strengthen the LSCB’s role in supporting / challenging partner agencies in their work to improve safeguarding practices. Building on the implementation of the Board’s ‘Safeguarding Tool Kit’, this regional collaboration will further help the LSCB develop its engagement of children/families and front line staff within quality assurance activities.
- **Culturally Harmful Behaviours** - the LSCB is mindful that within communities some individuals/ families may participate in practices that are harmful to children / young people. During the period of this report the Board considered the Government’s ‘National Action Plan for tackling child abuse linked to faith or belief’ and continues to require partners to remain vigilant as to these infrequent but significantly harmful incidence.
- **Forced Marriage and Female Genital Mutilation** - this type of abuse is not commonly reported within Bracknell Forest and as a result staff may not develop experience of managing such complex cases. In an attempt to support partners in maintaining awareness of these issues, the inter-agency guidance issued by the Board contains specific reference to local procedures, and links to both national guidance and fact sheets.
- **Engagement of Voluntary and Community Sector** – the LSCB recognises the important role that colleagues working in this sector play in protecting children and young people and the current challenges faced by local voluntary organisations. As a result the LSCB and Adult Safeguarding Board have begun to make renewed attempts to engage with local groups and are planning to establish a new Voluntary Sector Safeguarding Forum during 2013.



# 7. Priorities for 2013/14

The LSCB has completed its Business Plan for 2013/14 and in addition to the core strategic business priorities, has agreed five targeted priorities to focus on in the coming year. Three of these priorities continue from the Business Plan 2011-13 and there are two additional areas of priority -these are detailed below:

## **Targeted Priority 1**

Reduce incidences of domestic abuse and the impact this has on children, young people and families.

## **Targeted Priority 2**

Reduce the impact of substance and alcohol misuse on children, young people and families.

## **Targeted Priority 3**

Develop an understanding of neglect and the impact this has on children, young people and families.

## **Targeted Priority 4**

Develop and implement the framework for early help, and monitor the impact of this on children, young people and families

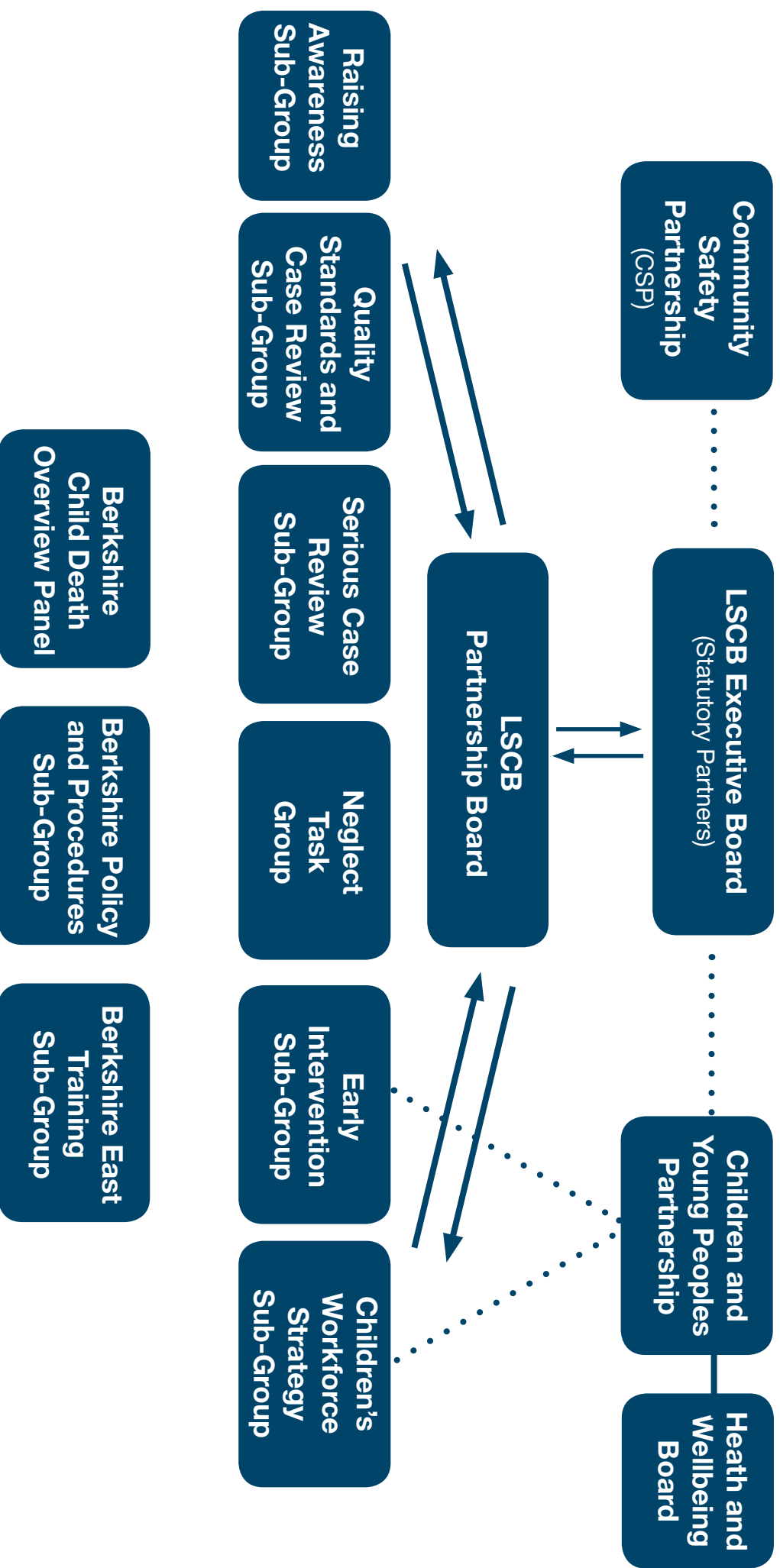
## **Targeted Priority 5**

To work with partner agencies to develop a strategy for the coordination and provision of support to young people at risk of child sexual exploitation.

## 8. Key Messages for all partners and strategic partnerships

- To ensure the relentless focus on **Early Help** and support the continued development of the Early Intervention Hub in order to support children and families in a timely/effective way and prevent the need for escalation. To ensure the step up/step down procedures to Children's Social Care are robust and reduce the need for children to become subject to Child Protection Plans.
- To ensure a continued focus on **Domestic Abuse** by partners to implement the Domestic abuse strategy and deliver services to reduce the impact on children from domestic abuse.
- To ensure that **Substance Misuse** services are effectively supporting those families where parental substance misuse is a risk to children and young people.
- To ensure that all organisations have mechanisms to listen to the **voice of children** and young people and their families
- To ensure that all organisations are **informed by feedback from their staff** on the effectiveness of safeguarding arrangements.
- To ensure that senior managers and all partner organisations continue to invest resource in safeguarding through **continued commitment** to the work of the LSCB and in particular support to the scrutiny and quality assurance functions.

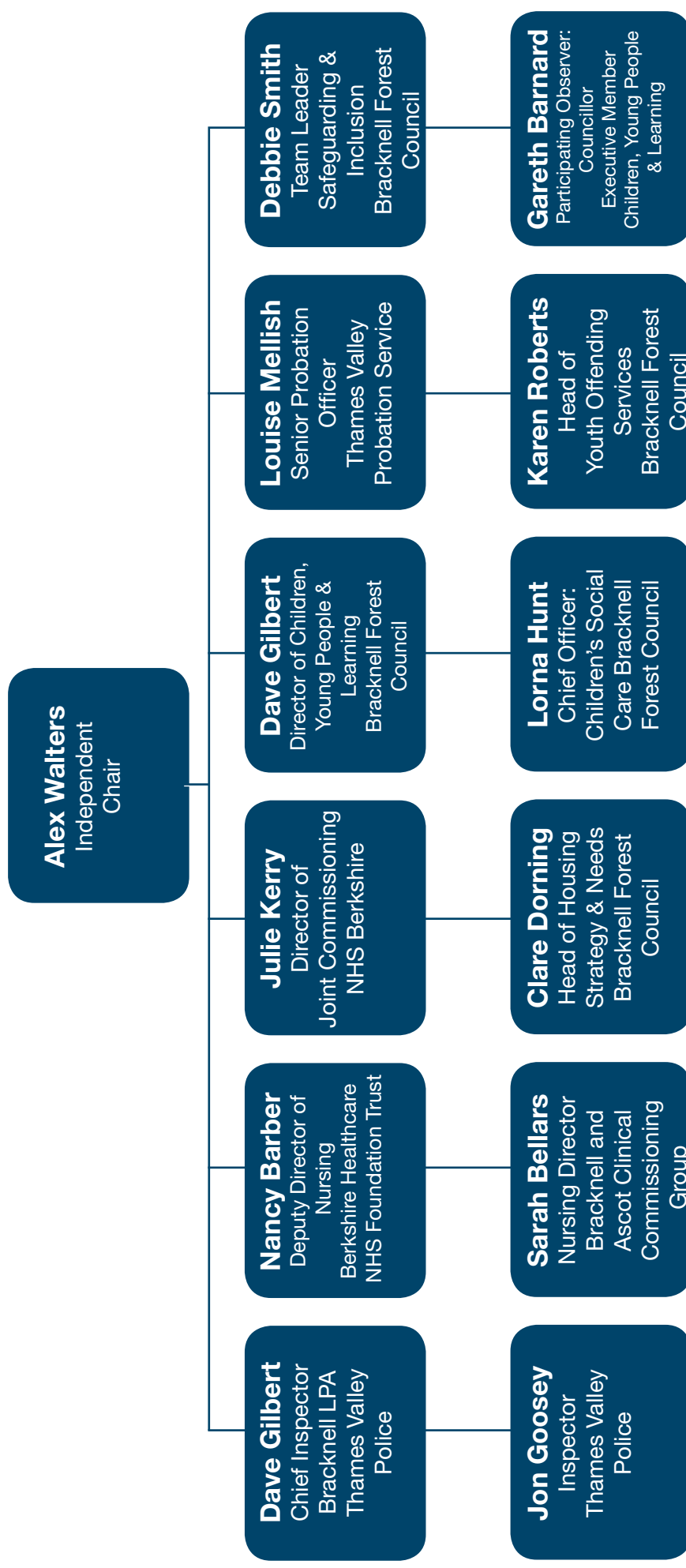
# Bracknell Forest LSCB Structure and Strategic Partnerships





# Bracknell Forest LSCB Executive

Appendix A2



[www.bflscb.org.uk](http://www.bflscb.org.uk)

For further information please contact: Bracknell Forest Local Safeguarding Children Board, Time Square, Market Street, Bracknell, Berkshire. RG12 1JD. Telephone: 01344 352000 Email: [enquiries@bflscb.org.uk](mailto:enquiries@bflscb.org.uk)

Period of Review	Agency/ Source	Indicator
Annually	Acute	Hospital admissions caused by unintentional or deliberate injuries to C&YP <sup>4</sup>
Six Monthly	BHCT/CAMHs	Number of Referrals to the CAMHs service per 10,000 population aged under 18
Six Monthly	BHCT/CAMHs	Number of children and young people on the CAMHs waiting list
Six Monthly	BHCT/CAMHs	% of Referrals to CAMHs leading to assessment
Annually	BHCT/CAMHs	Number of Under 18 admissions to Hospital for emotional health needs
Annually	BHCT /CAMHs	Number of children and young people diagnosed with ADHD/ ASD
Six Monthly	CAF	% of CAFs referred to Social Care/ CAMHs
Quarterly	DAT	Number of Under 18s in treatment year to date
Quarterly	DAT	Number of Parents/Carers in treatment year to date
Annually	DAT	Number of clients under 18 with Care Plans
Quarterly	Education	Rate of permanent exclusions from school
Annually	Education	Number of children and young people that are electively home educated
Quarterly	Housing <sup>5</sup>	Number of homeless children and young people
Quarterly	Housing	Number of evictions of families with dependent children and young people (not collected)
Annually	HR	% of Statutory workforce with appropriate and up-to-date CRB checks and vetting
Annually	LADO	% of Allegations leading to disciplinary action
Annually	LADO	% of Allegations leading to criminal conviction
Quarterly	Police	Victims of crime under 18 years of age: (1) Violence against children with injury
Quarterly	Police	Victims of crime under 18 years of age: (2) Violence against children without injury

<sup>4</sup> Children and Young People

<sup>5</sup> Meeting the definition of ‘statutory homeless’

<b>Period of Review</b>	<b>Agency/ Source</b>	<b>Indicator</b>
Quarterly	Police	Victims of crime under 18 years of age: (3) Robberies
Quarterly	Police	Victims of crime under 18 years of age: (4) Sexual offences
Quarterly	Social Care	Number of LAC <sup>6</sup> per 10,000 population aged under 18
Quarterly	Social Care	Number of C&YP with CP <sup>7</sup> Plans per 10,000 population aged under 18
Quarterly	Social Care	Number of Enquiries made to Children's Services per 10,000 population aged under 18
Quarterly	Social Care	The percentage of referrals made to Children's Services that led to an Initial Assessment
Annually	Social Care	% of referrals to social care that were repeat referrals
Annually	Social Care	% of LAC who participated in all their reviews during the period
Annually	Social Care	Number of children and young people in Private Fostering arrangements
Annually	Social Care	% of children becoming the subject of a CP Plan for a second or subsequent time
Annually	Social Care	% of children ceasing to be the subject of a CP Plan whose plan was in place for 2yrs +
Annually	Social Care	Emotional and behavioural health of Children in Care
Annually	Social Care	% of Initial Assessments for Children's Social Care carried out within 7 working days
Annually	Social Care	% of Core Assessments for Children's Social Care carried out within 35 working days
Annually	Social Care	% of LAC for whom all reviews in the year were carried out within the required timescales
Annually	Social Care	% of Child Protection Cases which were reviewed within the required timescales
Annually	Social Care	Stability of placements of LAC: number of placements
Annually	Social Care	Stability of placements of LAC: length of placement
Annually	TPU <sup>8</sup>	Under 18 conception rate
Quarterly	YOS	Number of first time entrants to the youth justice system (10-17 yrs)
Six Monthly	YOS	Number of young offenders who are sex offenders

<sup>6</sup> Looked After Children

<sup>7</sup> Child Protection

<sup>8</sup> Teenage Pregnancy Unit

# References

**1) Working Together to Safeguard Children (HM Gov, 2013)**

<http://www.workingtogetheronline.co.uk/documents/Working%20TogetherFINAL.pdf>

**2) s13.Children Act 2004**

<http://www.legislation.gov.uk/ukpga/2004/31/part/2/crossheading/local-safeguarding-children-boards>

**3) s5 Local Safeguarding Children Boards Regulations 2006**

<http://www.legislation.gov.uk/uksi/2006/90/regulation/5>

**4) s11.Children Act 2004**

<http://www.legislation.gov.uk/ukpga/2004/31/section/11>

**5) New learning from serious case reviews: a two year report for 2009-2011 (HGov, 2012)**

[https://www.gov.uk/government/uploads/system/uploads/attachment\\_data/file/184053/DFE-RR226\\_Report.pdf](https://www.gov.uk/government/uploads/system/uploads/attachment_data/file/184053/DFE-RR226_Report.pdf)

**6) Berkshire Local Safeguarding Children Board's Child Protection Procedures (Online)**

<http://berks.proceduresonline.com/chapters/contents.html>

Copies of this booklet may be obtained in large print, Braille, on audio cassette or in other languages. To obtain a copy in an alternative format please telephone 01344 352000.

### **Nepali**

यस प्रचारको सक्षेपं वा सार निचोड चाहिं दिइने छ, ठूलो अक्षरमा, ब्रेल वा क्यासेट सून्नको लागी । अरु भाषाको नक्कल पनि हासिल गर्न सकिने छ । कृपया सम्पर्क गर्नुहोला ०१३४४ ३५२००० ।

### **Tagalog**

Mga buod/ mga hango ng dokumentong ito ay makukuha sa malaking letra, limbag ng mga bulag o audio kasette. Mga kopya sa ibat-ibang wika ay inyo ring makakamtan. Makipag-alam sa 01344 352000

### **Urdu**

اس دستاویز کے خلاصے یا مختصر متن جملی حروف، بریل لکھائی یا پھر آڈیو کیسٹ پر ریکارڈ شدہ صورت میں فراہم کئے جا سکتے ہیں۔ دیگر زبانوں میں اس کی کاپی بھی حاصل کی جا سکتی ہے۔ اس کے لیے براہ مہربانی ٹیلیفون نمبر 01344 352000 پر رابطہ کریں۔

### **Polish**

Streszczenia lub fragmenty tego dokumentu mogą być dostępne w wersji napisanej dużym drukiem, pismem Brajla lub na kasecie audio. Można również otrzymać kopie w innych językach. Proszę skontaktować się z numerem 01344 352000.

### **Portuguese**

Podemos disponibilizar resumos ou extractos deste documento em impressão grande, em Braille ou em audiocassete. Podem também ser obtidas cópias em outros idiomas. Por favor ligue para o 01344 352000.